

Update Guide For Galaxy S8/S8+ LDU

Notice

Discover S8(experience app) changed recently so it need to be updated to latest version.

What's new

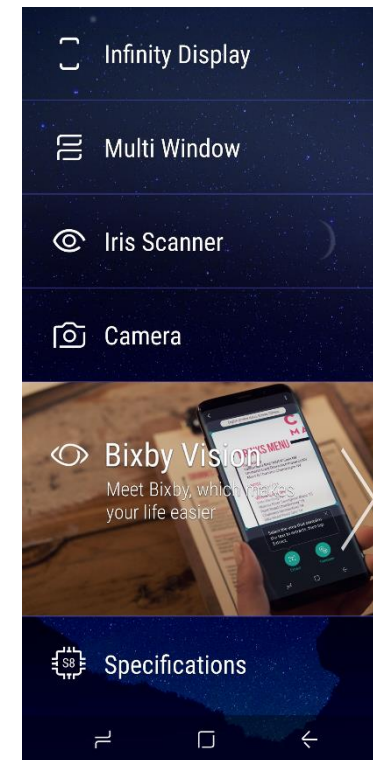
Bixby Vision menu name and icon are changed to **Bixby**

How to Update

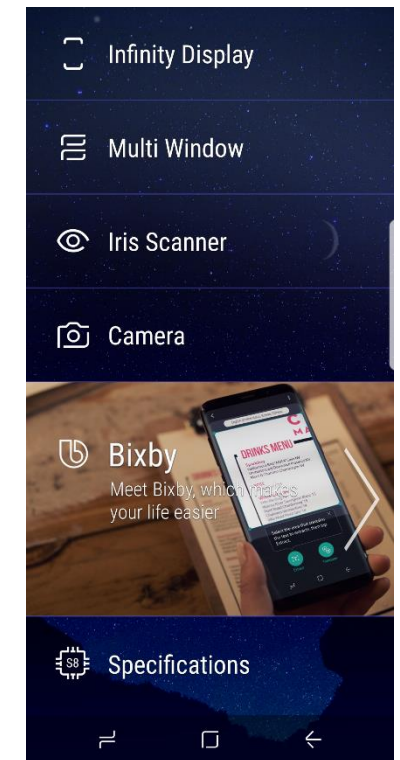
There are two kind of way to update it.

1. Auto update through the RMS server. Your device should be connected to RMS server.
2. Manual update through the RetailMedia.patch file. It will be uploaded on PVI and retailsamsung.com on 3/29

LDU Preload Version



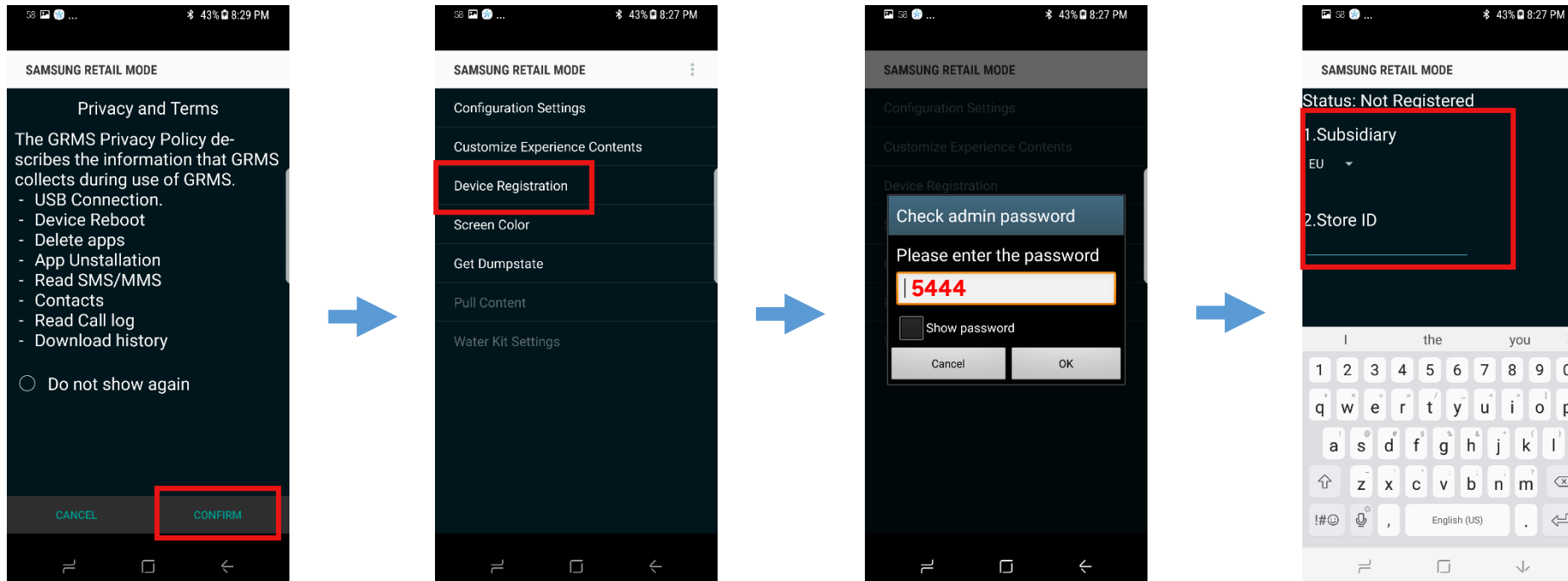
Update version



Auto update through the RMS

1. Register RMS

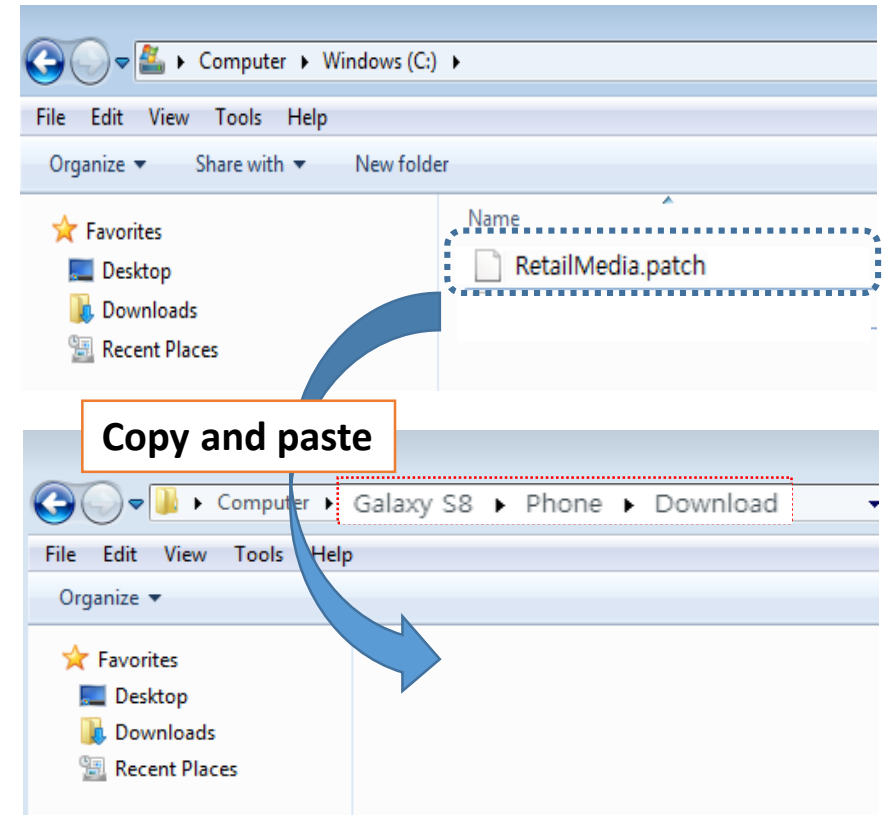
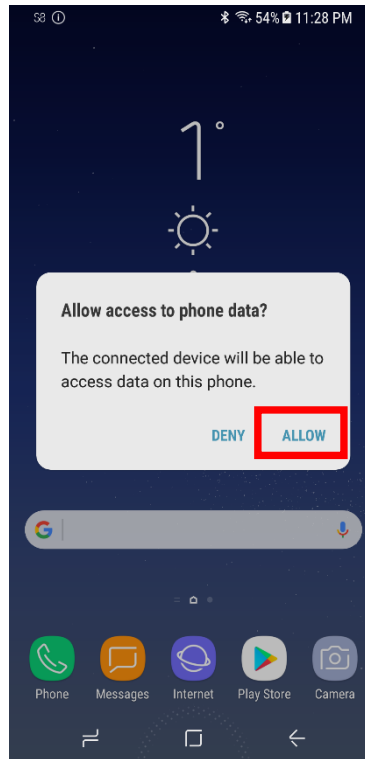
1. Connect WiFi first and Run Samsung Retail Mode application
2. Click Confirm button
3. Click 'Device Registration'
4. Enter master password as "5444"
5. Set up your subsidiary and Store ID
6. Wait for registration completion
7. Discover S8 will be updated automatically



Manual update through the RetailMedia.patch

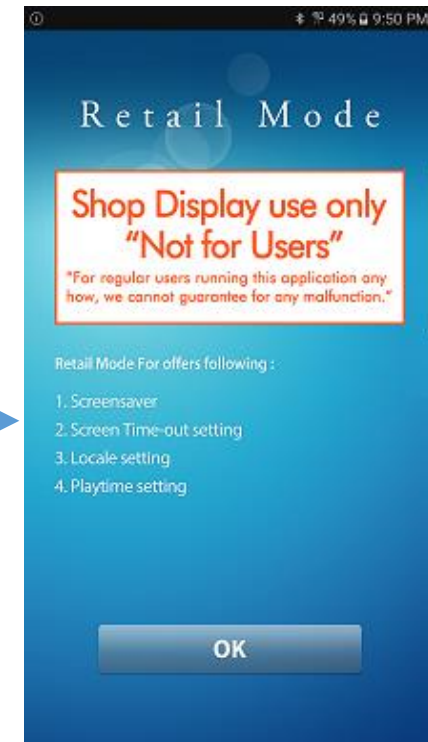
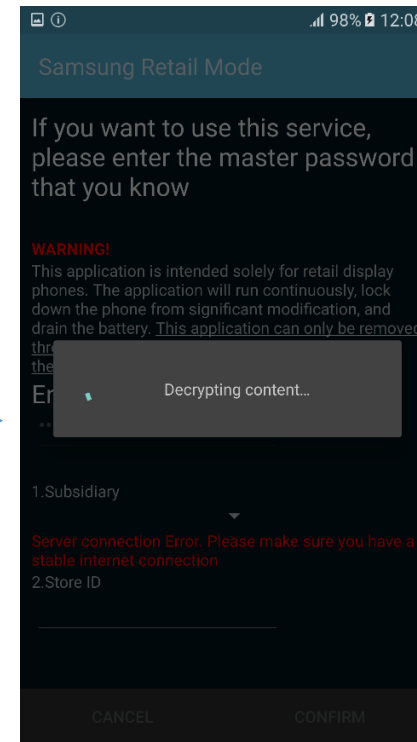
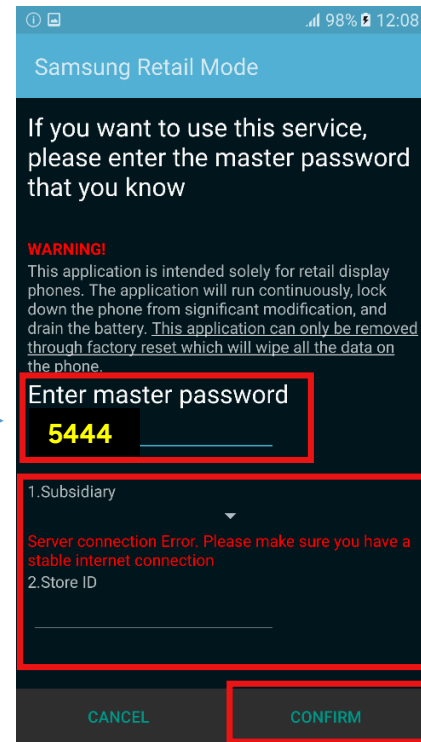
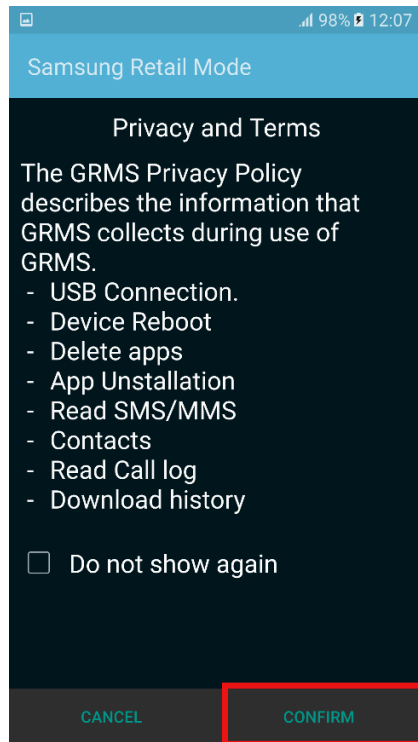
1. Updating RetailMode

1. Please download RetailMedia.patch file from PVI or retailsamsung.com
2. Connect the phone with your computer, then click 'ALLOW' button in "Allow access.." pop-up
3. Copy "RetailMedia.patch" file into "Download" folder on your phone



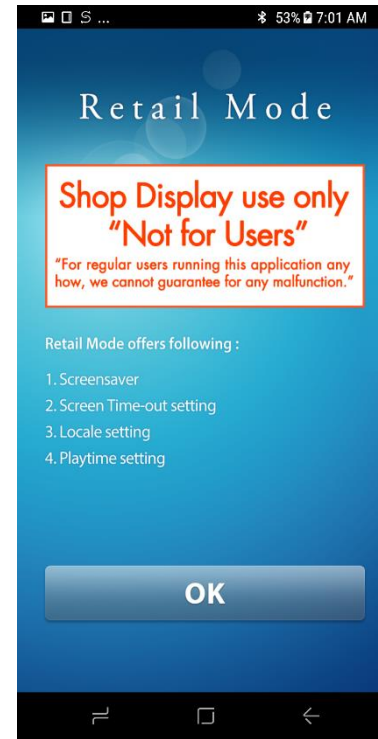
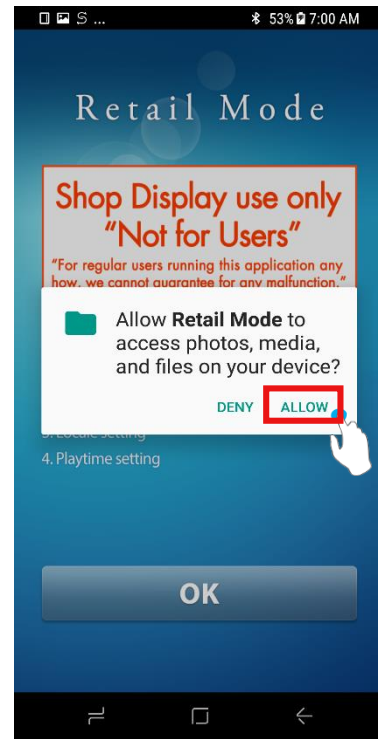
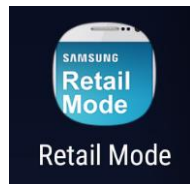
1. Updating RetailMode

4. Run Samsung Retail Mode application
5. Click Confirm button
6. Enter master password as "5444" and set up your subsidiary and Store ID
7. Wait for auto installation done.
8. After completion of installation then Retail Mode app started automatically



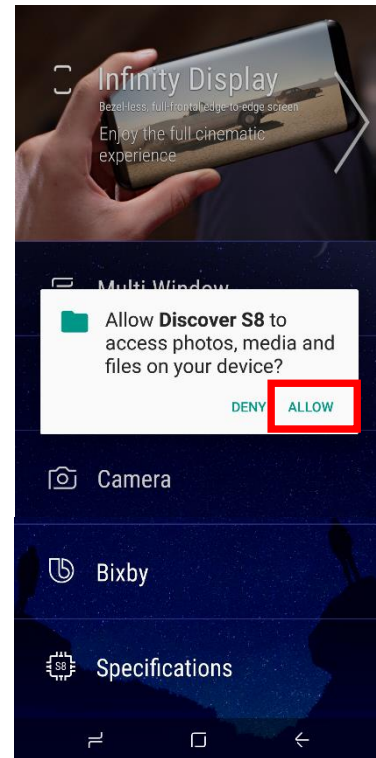
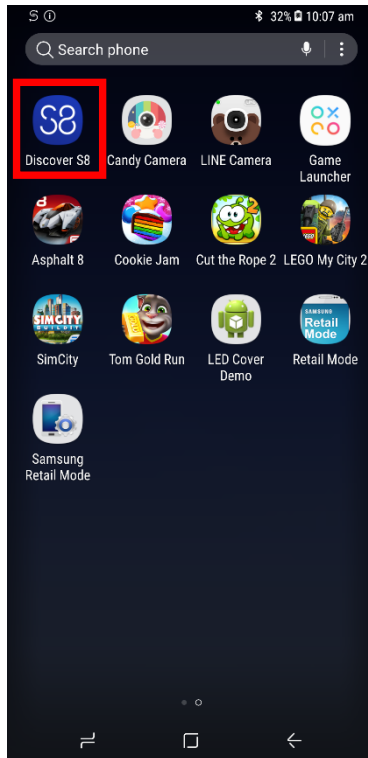
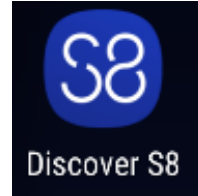
1. Updating RetailMode

9. Open "Retail Mode" application
10. If pop-up shows, Click "ALLOW" button



2. Check experience app

1. Run "Discover S8" Application
2. Click ALLOW button
3. Finish "Discover S8" Application
4. Check the menu changed to "Bixby"



End Of Document