

J 2017 Retail Mode Installation Guide

2017. June
Retail Team

RDU(Real Demo Unit) package download path

1. PVI system (<http://pvi.samsung.com>)
 - 1) Enter By Material > In-Store Material > Demo Unit Material
 - 2) Search marketing name as Title

Product Information

In-store Material

Merchandising Material (POP)

Catalog

Leaflet

Store Guideline

Retail Training

Demo Unit Material

ATL Creative

Demo Unit Material

Region: All Region

Date: 2016-05-10 ~ 2017-05-10 12M All

Title: **ex : J5**

Uploaded By: [] Tag: Select tag

B2B Only Include All GBM

All Screensaver/Retail Mode Screen Image/Wallpaper Others

Search

2. RetailSamsung (<http://retailsamsung.com>)
 - 1) Search marketing name

Retailmode

Menu

- Retailmode**
- Smart Camera
- Mobile Catalog
- Others

ex : J5 **Go**

Product Name	Model Name	Register Date
--------------	------------	---------------

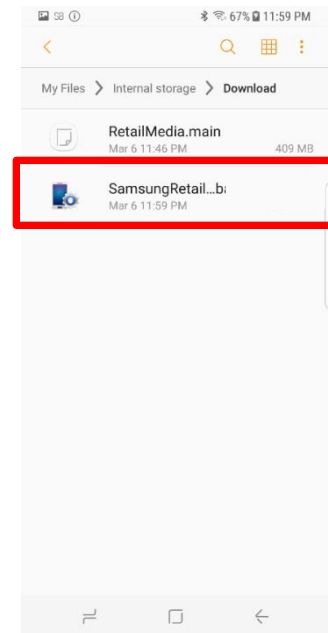
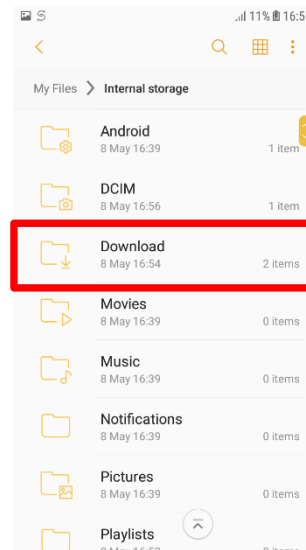
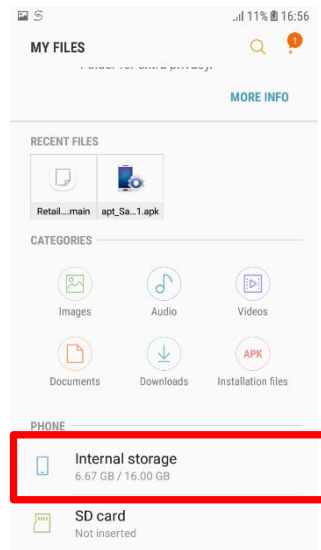
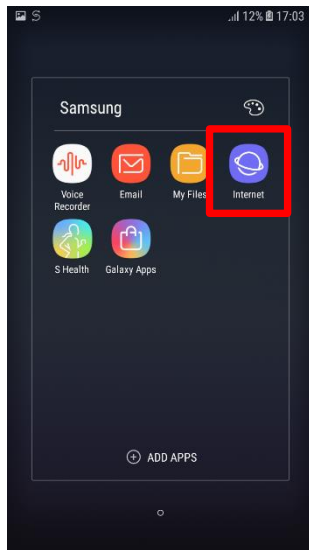
RDU(Real Demo Unit) set up guide

1. Prepare 2 files(SamsungRetailMode apk, RetailMedia.main)
 - RDU package is available on PVI(<http://pvi.samsung.com>)
 - RDU package is available on RetailSamsung(<http://retailsamsung.com>) after Launching
2. Connect the phone with your computer, then click 'ALLOW' button in "Allow access.." pop-up
3. Copy 2 files(SamsungRetailMode apk, RetailMedia.main) into "Download" folder on your phone



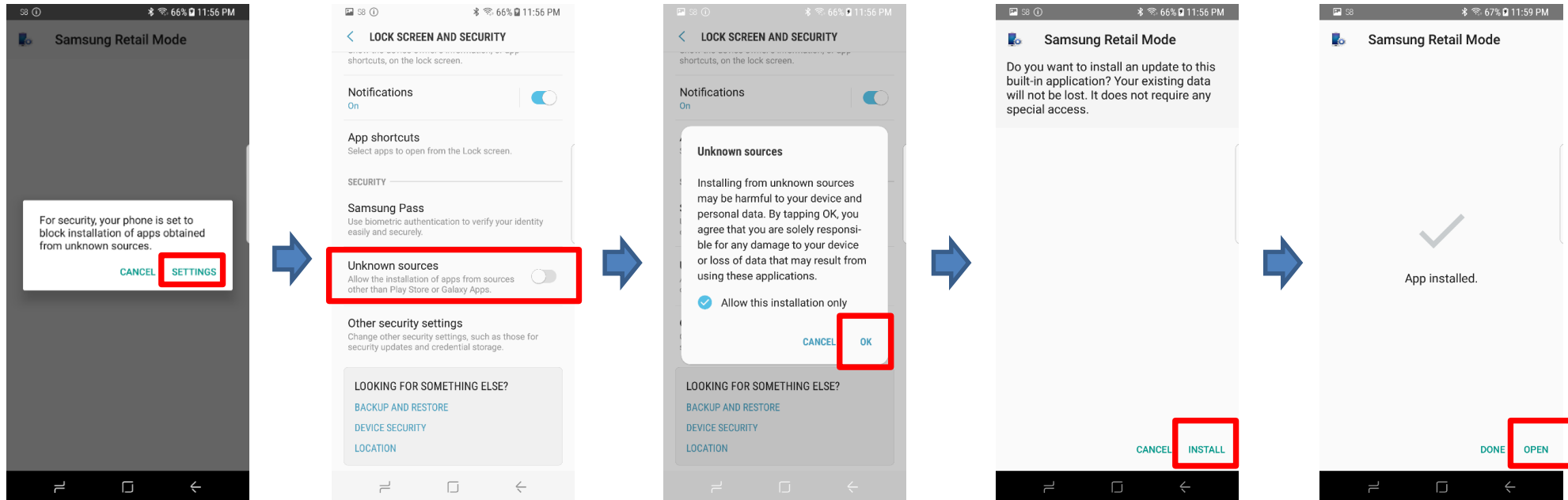
RDU(Real Demo Unit) set up guide

4. Run "My Files" application
5. Click "Internal Storage"
6. Click "Download"
7. Click Samsung Retail Mode apk to install



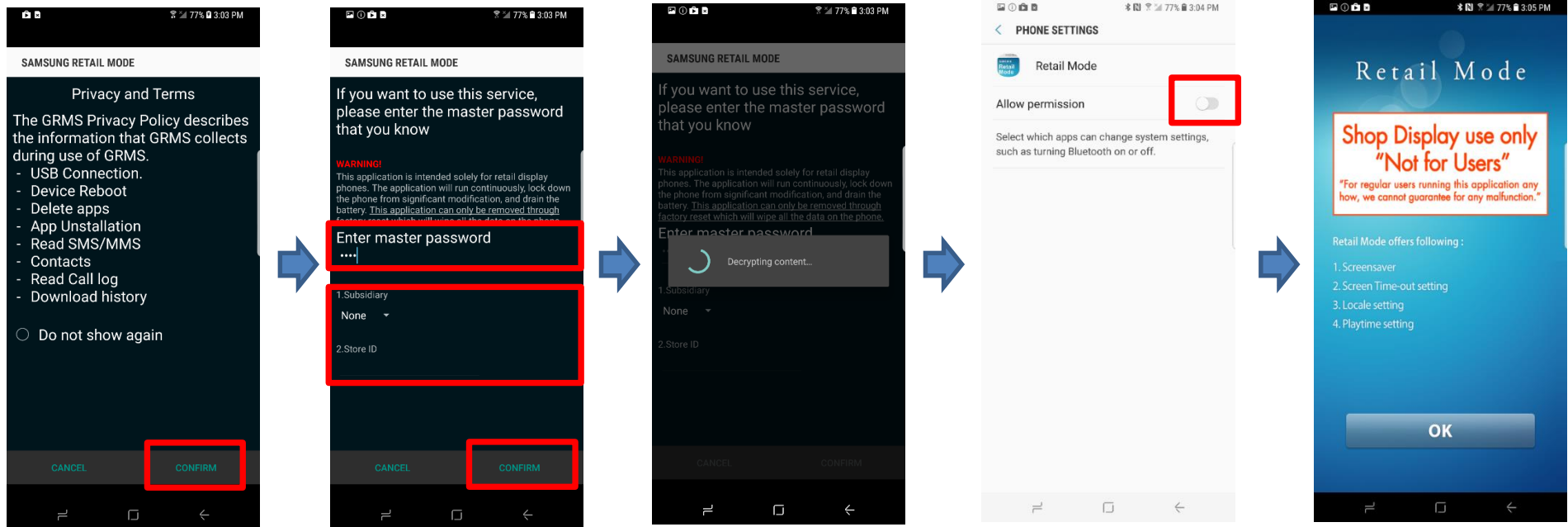
RDU(Real Demo Unit) set up guide

8. Click "SETTINGS" button
9. Turn on "Unknown sources" option
10. Click "OK" button
11. Click "INSTALL" button
12. Click "DONE" button



RDU(Real Demo Unit) set up guide

13. Click "Confirm" button
14. Enter master password(5444), your subsidiary, Store ID and click "Confirm" button
15. Wait for auto installation done
16. Turn on the option and press Back key 2 times instead of pressing home key

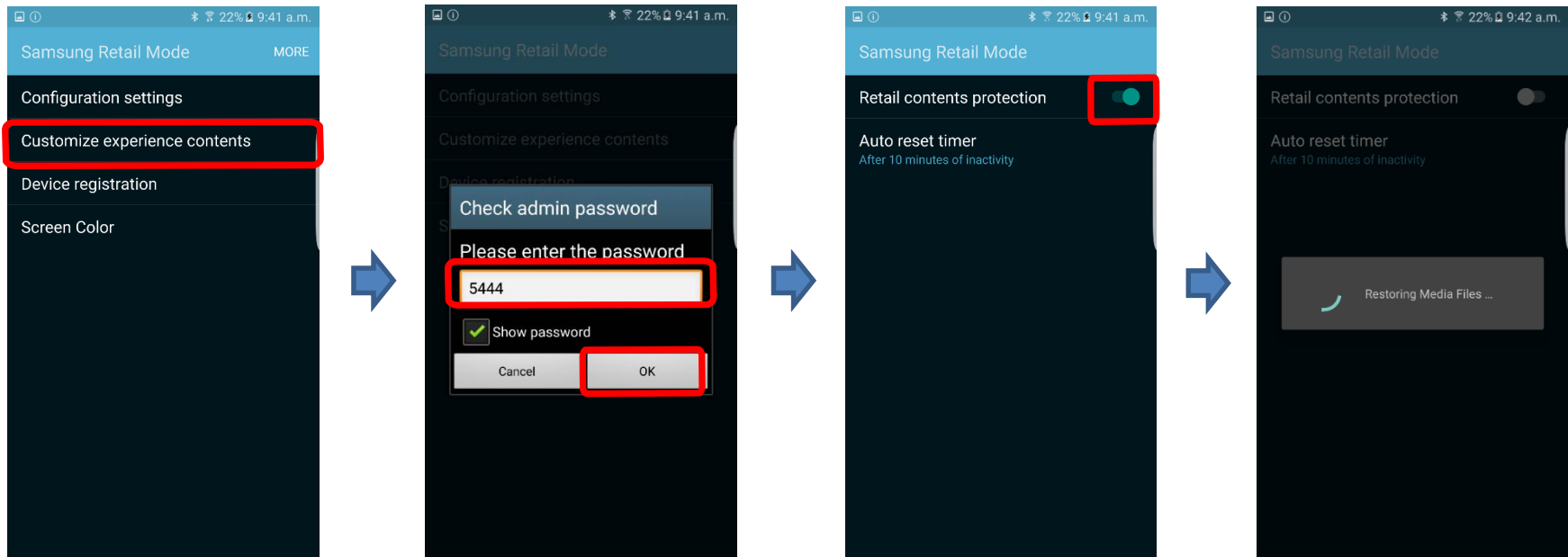


Appendix

[Appendix] How to add local contents(1)

※ Maximum size of local contents is 2GB

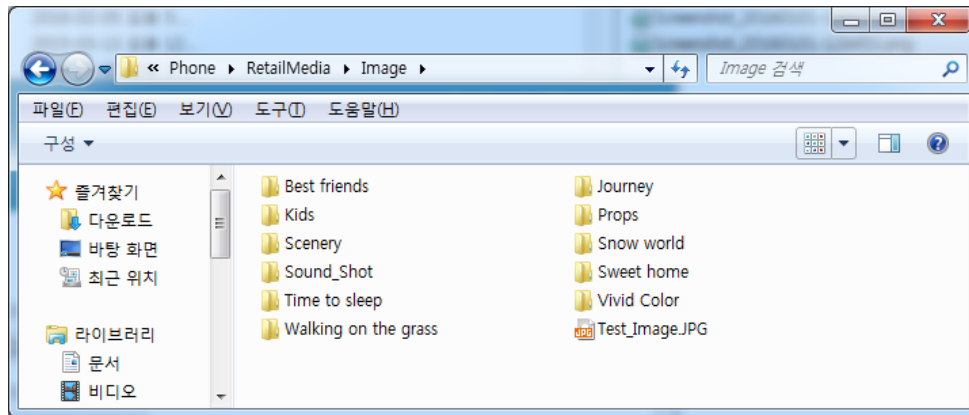
1. Run "Samsung Retail Mode" application
2. Select "Customize experience contents" menu
3. Input password as "5444" and Click OK button
4. Turn off "Retail contents protection"
5. Wait until the progress bar is gone.



[Appendix] How to add local contents(1)

6. Copy your image, video files into Phone > RetailMedia > Image folder

7. Copy your music files into Phone > RetailMedia > Music folder



<Copy the files>

※ Maximum size of local contents is 2GB

[Appendix] How to add local contents(3)

8. Run "Samsung Retail Mode" application
9. Select "Customize experience contents" menu
10. Input password as "5444" and Click OK button
11. Turn on "Retail contents protection"
12. The phone will reset automatically

