

Retail mode installation guide

Notice

1. App icon change

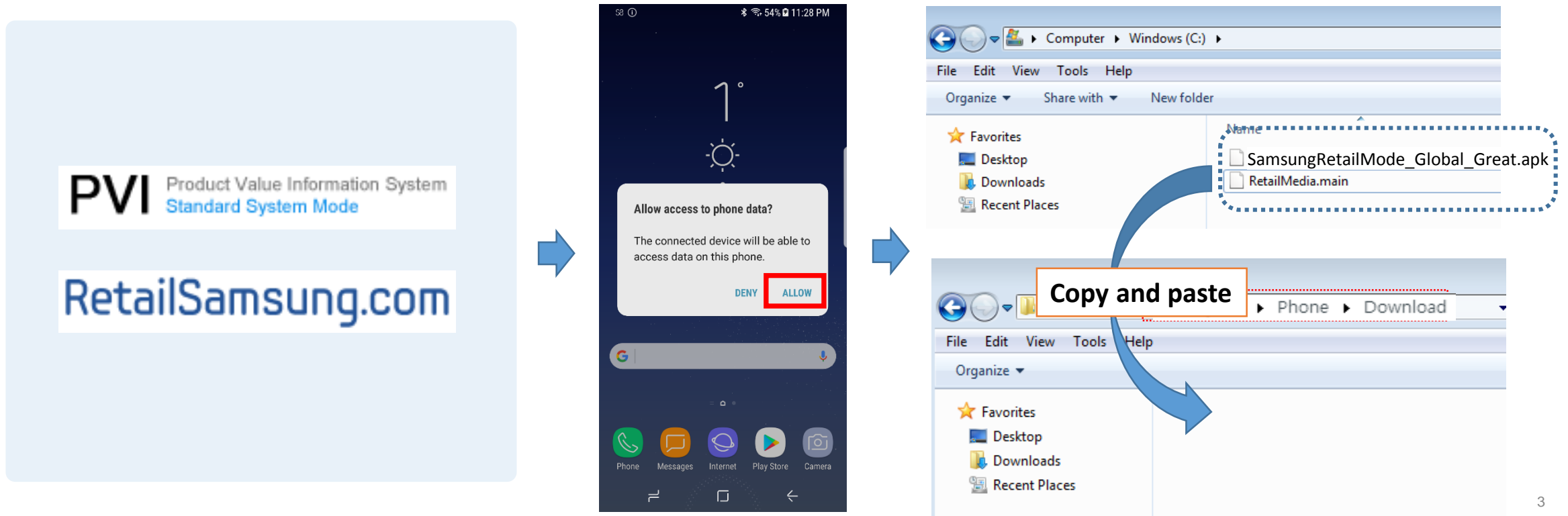
1. Retail Mode / Samsung Retail Mode App icon was changed.
2. Check previous and new application icon like below images.



RDU(Real Demo Unit) set up guide

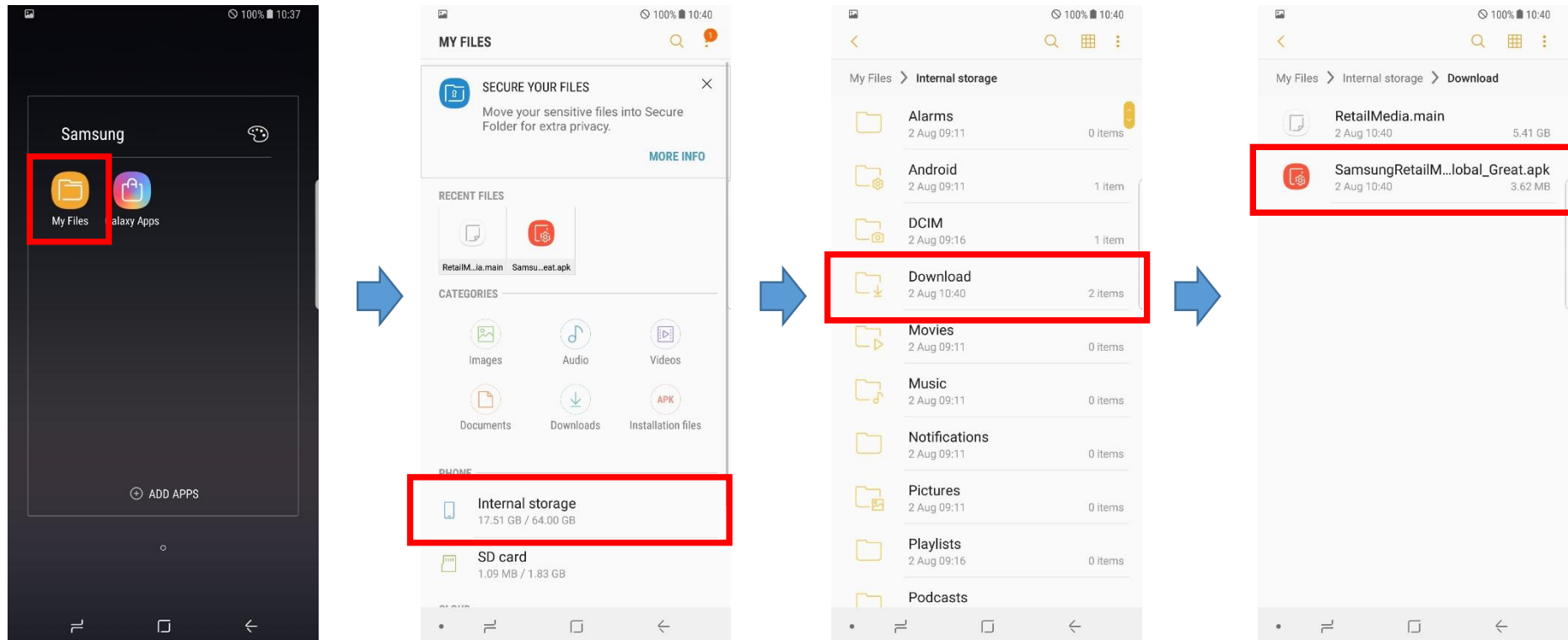
When you download files on computer

1. Prepare "SamsungRetailMode_Global_Great.apk, RetailMedia.patch" files
 - Update package is available on PVI(<http://pvi.samsung.com>)
 - Update package is available on RetailSamsung(<http://retailsamsung.com>)
2. Connect the phone with your computer, click 'ALLOW' button in "Allow access.." pop-up
3. Copy "RetailMedia.patch" file into "Download" folder on your phone



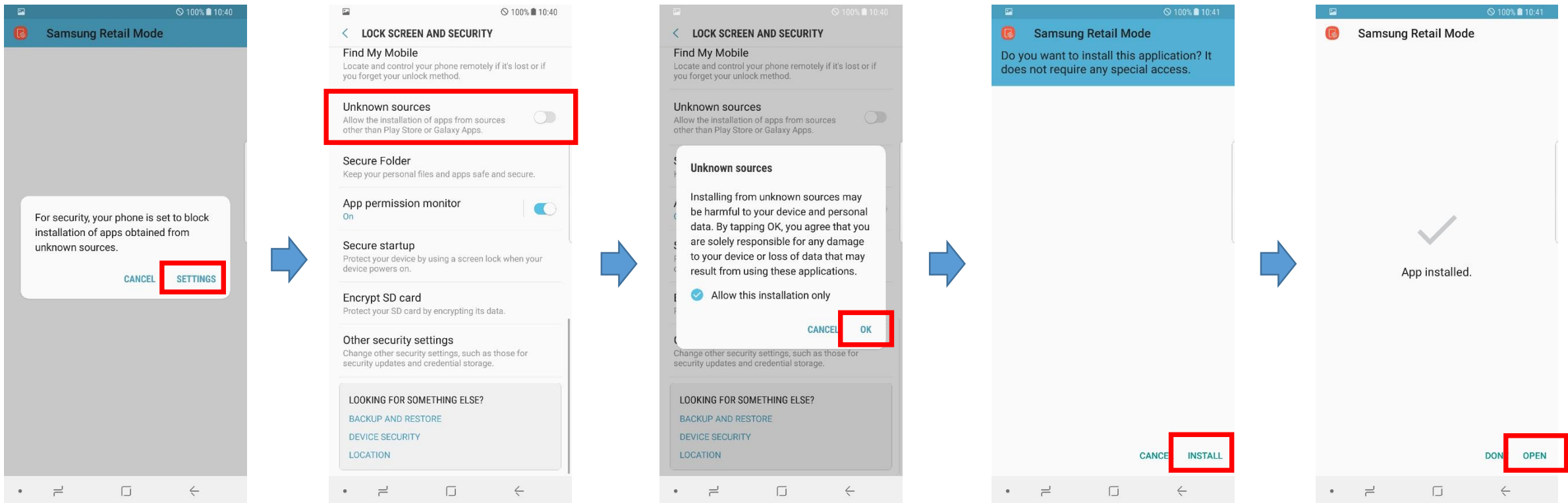
RDU(Real Demo Unit) set up guide

4. Run "My Files" application
5. Click "Internal Storage"
6. Click "Download"
7. Click Samsung Retail Mode apk to install



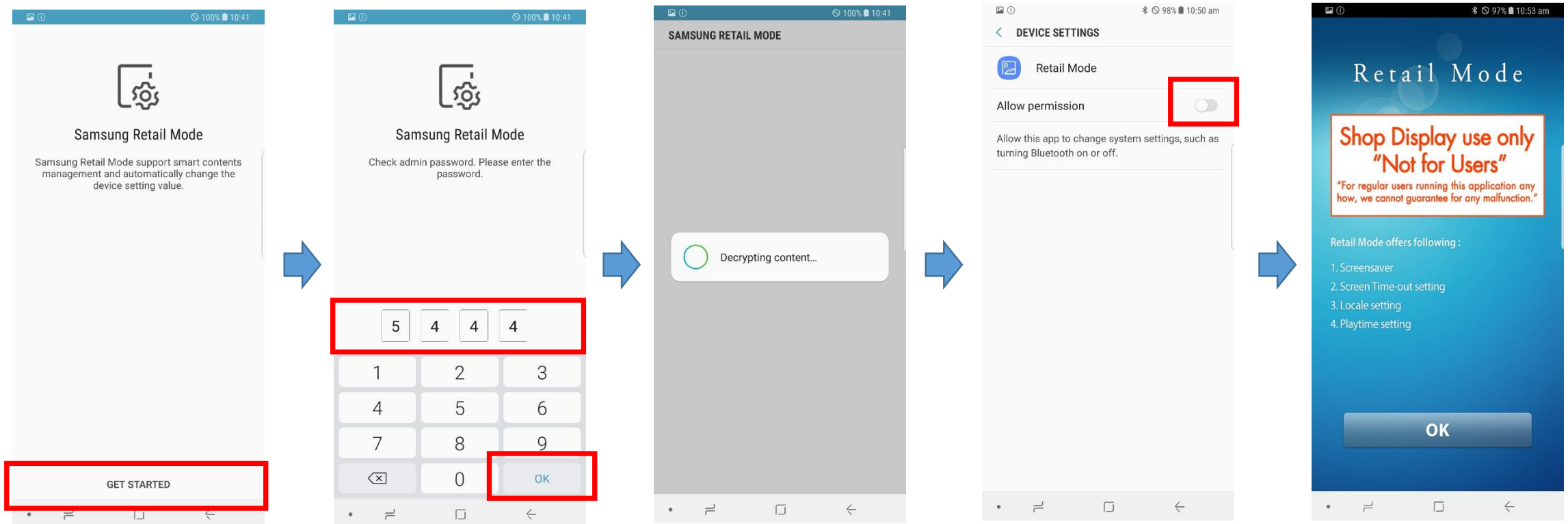
RDU(Real Demo Unit) set up guide

8. Click "SETTINGS" button
9. Turn on "Unknown sources" option
10. Click "OK" button
11. Click "INSTALL" button
12. Click "DONE" button



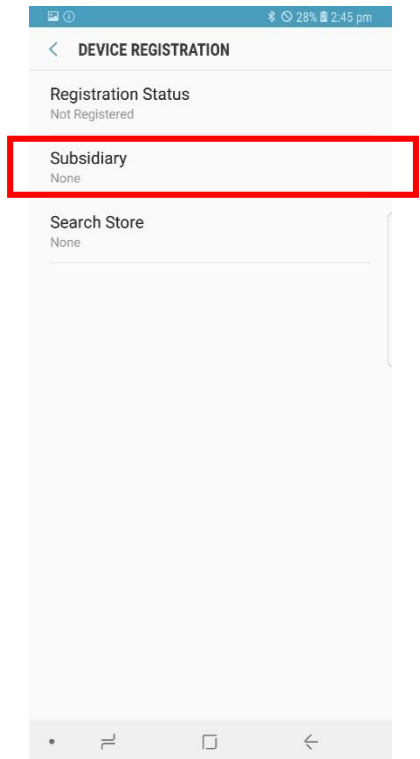
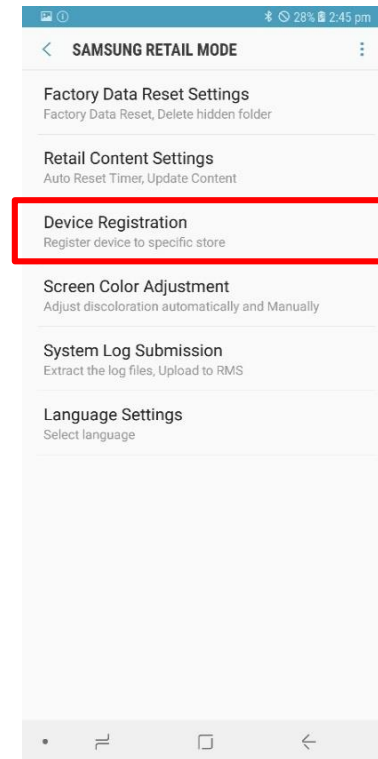
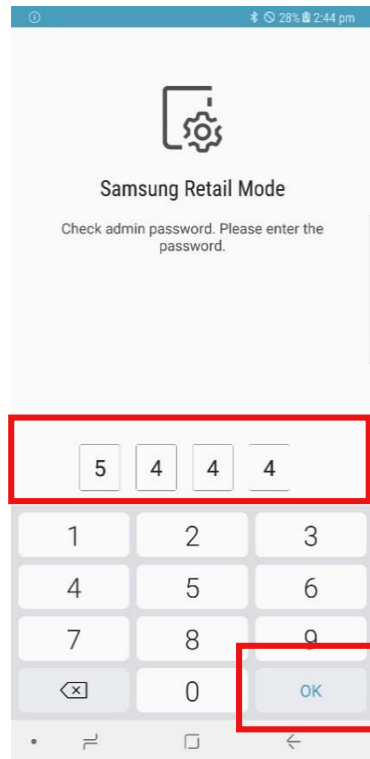
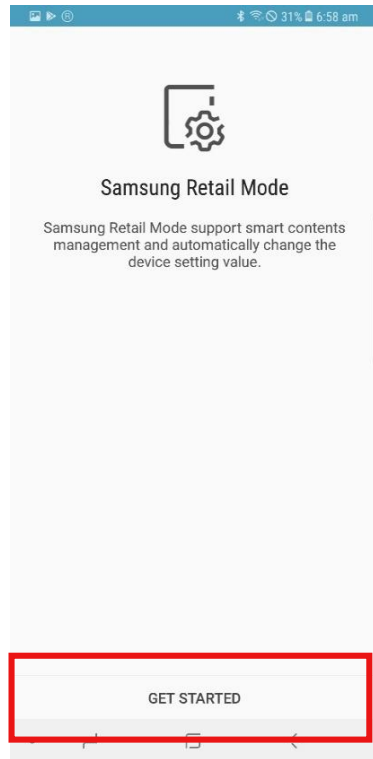
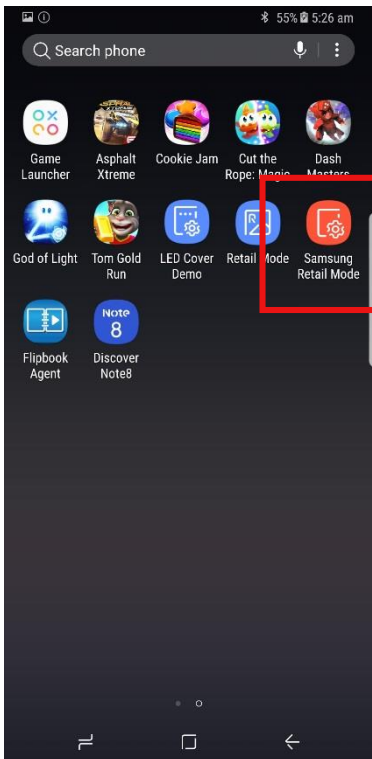
RDU(Real Demo Unit) set up guide

13. Click "GET STARTED" button
14. Enter master password(5444) and Click OK button
15. Wait for auto installation done(10mins)
16. Turn on the option and press Back key 2 times instead of pressing home key



RDU(Real Demo Unit) set up guide

17. Run Samsung Retail Mode application
18. Click "GET STARTED" button
19. Enter master password as "5444" and Click "OK"
20. Click "Device Registration"
21. Click "Subsidiary"



RDU(Real Demo Unit) set up guide

22. Select your Subsidiary
23. Click "Search Store"
24. Select Search type.
25. Select your store ID or Name and Click "Back Key"
26. Wait for registration done

